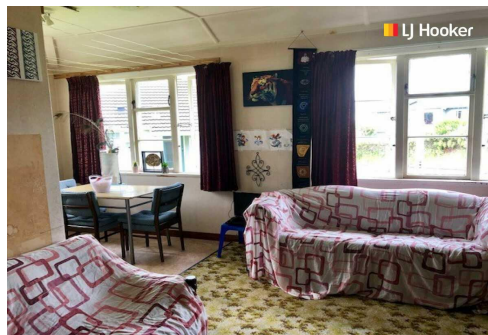


**SOLD**



## Calton Hill, 143 Riselaw Road

Auction Wednesday 20th November – The Perfect Project

Auction Location: LJ Hooker Dunedin Office, 63 Musselburgh Rise

Bring your imagination and renovation flair!! This two bedroom brick property has heaps of potential to modernise and add value.

Positioned on the corner of Corstorphine Road and Riselaw Road on a large section enjoying all day sun, this could be your first step on the property ladder. Separate kitchen, living with inbuilt wood burner and HRV system, bathroom with vanity, toilet and shower over bath. Separate laundry, with good basement storage, 3 garden sheds and close to public transport.

Take advantage to secure for yourself or add to your portfolio.

This home is ready for the next chapter – Move in and plan your makeover.

2 

1 

0 

**For Sale**

Auction

**View**

[ljhooker.co.nz/21ZIGDS](http://ljhooker.co.nz/21ZIGDS)

## More About this Property

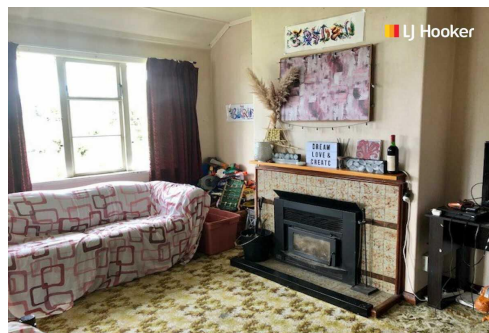
<b>Property ID</b>	21ZIGDS
<b>Property Type</b>	House
<b>Land Area</b>	668 m²
<b>Including</b>	Toilets (1)
<b>Licensed Real Estate Agents (REAA2008)</b>	

### LJ Hooker Dunedin (03) 470 1370

Wayne Graham Realty Ltd

63 Musselburgh Rise, Dunedin 9013

dunedin.ljhooker.co.nz | dunedin@ljhdunedin.co.nz



**LJ Hooker Dunedin**  
**(03) 470 1370**

**Disclaimer:** All information contained therein is gathered from relevant third parties sources. We cannot guarantee or give any warranty about the information provided. Interested parties must rely solely on their own enquiries.