



Sold

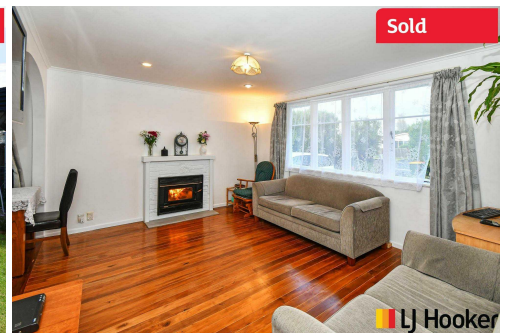
SOLD



Sold



Sold



Sold

## Manurewa, 1/85 Jellicoe Road

Motivated Vendor – Bring your offers NOW!

First home buyers, families & investors this is a wonderful opportunity to move into this prime location & reap the rewards. Close to all amenities - shopping centers, medical centers, schools & public transport.

Be self sufficient here! This property is perfect for growing your own vegetables, and harvesting your own eggs! Space for chickens, and established gardens in both front & back yards - you're off to a great start!

Key Features of this property include:

- 4 bedrooms & 1.5 bathroom



**For Sale**

\$765,000

**View**

[ljhooker.co.nz/83SHFY](http://ljhooker.co.nz/83SHFY)

**Contact**

**Liana Sullivan**

0272200961

[liana.karaka@ljhooker.co.nz](mailto:liana.karaka@ljhooker.co.nz)

**Ena Aholelei**

022 8071 888

[ena.karaka@ljhooker.co.nz](mailto:ena.karaka@ljhooker.co.nz)



**LJ Hooker Pukekohe**  
**(09) 239 1356**

**Disclaimer:** All information contained therein is gathered from relevant third parties sources. We cannot guarantee or give any warranty about the information provided. Interested parties must rely solely on their own enquiries.



- Lounge with working fireplace
- Beautiful wooden flooring
- Outdoor covered entertainment area with swings for the kids & gardens for the green thumbs
- Detached single external access garage with laundry space & storage room
- An approx. 10 min drive to all amenities - Super Clinic, Shopping Centers & Motorway Exchanges for North and South

Get in touch today - Liana 027 220 0961 / Ena 022 807 1888

PLEASE NOTE: Specified floor and land area sizes have been obtained from sources such as Property Smart, Auckland Council (LIM) or Title documents. They have not been measured by the Salesperson or LJ Hooker - Realty 2000 Limited. We recommend you seek your own independent legal advice if these sizes are material to your purchasing decision.

## More About this Property

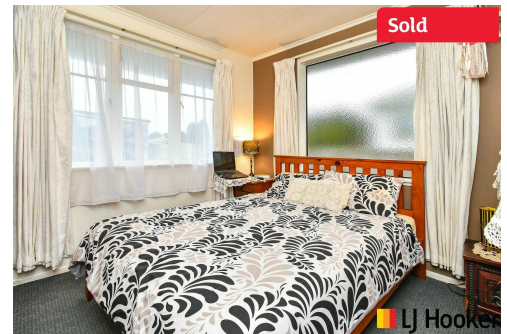
<b>Property ID</b>	83SHFY
<b>Property Type</b>	House
<b>House Size</b>	100 m <sup>2</sup>
<b>Land Area</b>	472 m <sup>2</sup>
<b>Including</b>	Toilets (1)
<b>Licensed Real Estate Agents (REAA2008)</b>	

**Liana Sullivan 0272200961**  
 | liana.karaka@ljhooker.co.nz  
**Ena Aholelei 022 8071 888**  
 | ena.karaka@ljhooker.co.nz

**LJ Hooker Pukekohe (09) 239 1356**  
 Realty 2000 Ltd  
 7 Paerata Road, Pukekohe 2120  
 pukekohe.ljhooker.co.nz | pukekohe@ljhooker.co.nz



**Disclaimer:** All information contained therein is gathered from relevant third parties sources. We cannot guarantee or give any warranty about the information provided. Interested parties must rely solely on their own enquiries.



**LJ Hooker Pukekohe**  
**(09) 239 1356**