

## Marchwiell, 271 Selwyn Street

This will tick your boxes!

This stunning three-bedroom red brick home is situated in a prime location, right next door to the park with sea views from the dining room. With double glazing throughout and a central vacuum system, you'll be able to enjoy peace and quiet in comfort.

With the added extra bonus of two bathrooms, it's perfect for a family wanting that extra space.

The sealed drive-on access with a large double garage and woodshed gives you plenty of space for your vehicles and storage needs. Plus, there's enough room to turn around or even park your caravan!

The well-positioned house captures the sun all day, making it the perfect place



**Disclaimer:** All information contained therein is gathered from relevant third parties sources. We cannot guarantee or give any warranty about the information provided. Interested parties must rely solely on their own enquiries.

**SOLD**

3 

2 

2 

**For Sale**

Enquiries Over \$519,000

**View**

[ljhooker.co.nz/1490GTA](http://ljhooker.co.nz/1490GTA)

**Contact**

**Joelle Snook**

027 844 5432

[joelle.timaru@ljhooker.co.nz](mailto:joelle.timaru@ljhooker.co.nz)

**Ben Groundwater**

027 415 6405

[ben.timaru@ljhooker.co.nz](mailto:ben.timaru@ljhooker.co.nz)

**LJ Hooker Timaru**  
**(03) 688 3029**

to relax and unwind. And, with the maintained and established garden, you can enjoy the outdoors without spending all your hours maintaining it.

Don't miss out on this amazing opportunity to own your dream home in a great location!

Disclaimer:

This information has been supplied by the owners and Corelogic. LJ Hooker Timaru, Geraldine and Waimate are merely passing over this information as supplied to us. We cannot guarantee its accuracy and reliability as we have not checked, audited or reviewed the information. All intending purchasers are advised to conduct their own due diligence investigation into this information. To the maximum extent permitted by law, we do not accept any responsibility to any part for the accuracy or use of the information herein. Enting Real Estate Limited Licensed (REAA 2008).

## More About this Property

<b>Property ID</b>	1490GTA
<b>Property Type</b>	House
<b>House Size</b>	110 m <sup>2</sup>
<b>Land Area</b>	655 m <sup>2</sup>
<b>Including</b>	Toilets (2)
<b>Licensed Real Estate Agents (REAA2008)</b>	

**Joelle Snook 027 844 5432**

| [joelle.timaru@ljhooker.co.nz](mailto:joelle.timaru@ljhooker.co.nz)

**Ben Groundwater 027 415 6405**

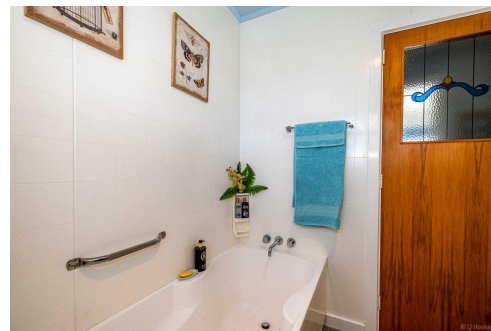
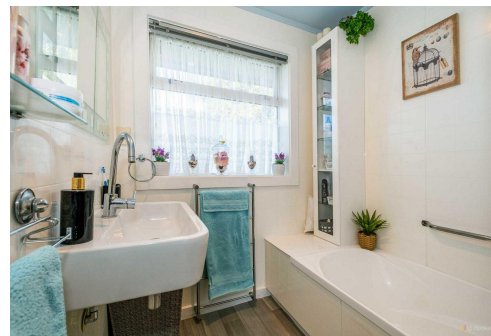
Property Consultant | [ben.timaru@ljhooker.co.nz](mailto:ben.timaru@ljhooker.co.nz)

**LJ Hooker Timaru (03) 688 3029**

Enting Real Estate Limited

51 Church Street, Timaru 7910

[timaru.ljhooker.co.nz](http://timaru.ljhooker.co.nz) | [timaru@ljhooker.co.nz](mailto:timaru@ljhooker.co.nz)



**LJ Hooker Timaru  
(03) 688 3029**

**Disclaimer:** All information contained therein is gathered from relevant third parties sources. We cannot guarantee or give any warranty about the information provided. Interested parties must rely solely on their own enquiries.