



Awapuni, 28 Frimley Street

Charming Brick Townhouse In Superb Location!

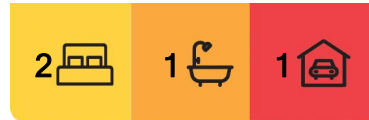
Nestled within the sought-after Riverdale, this delightful two-bedroom townhouse offers a blend of modern comfort with convenient living. Situated on a fee-simple section, this low-maintenance gem presents an ideal haven for downsizers.

This well-presented, warm, and inviting home has received some modern updates. The layout features a cosy separate living area, a combined dining space and a neatly appointed kitchen. Experience elevated comfort through Insulmax wall insulation, along with ceiling insulation and a heat pump, ensuring all year-round comfort.

Featuring two double bedrooms, including a generously proportioned master bedroom. The well maintained bathroom is complemented by a separate toilet for added convenience.



Disclaimer: All information contained therein is gathered from relevant third parties sources. We cannot guarantee or give any warranty about the information provided. Interested parties must rely solely on their own enquiries.



For Sale

Enquiries Over \$459,000

View

ljhooker.co.nz/VWDGFB

Contact

Angela Martin

027 739 3370

angela.martin@ljhookerpn.co.nz

**LJ Hooker Palmerston North
(06) 358 9009**

Embrace the ease of a dedicated laundry area and internal access single garaging along with extra parking space. Set on a easy-care section with a fully fenced backyard, providing a secure and safe space for your furry friends and small garden to enjoy.

The prime location offers close proximity to picturesque Riverwalks, handy to Riverdale shopping centre and public transport. A short drive to the central city completes the convenience. This brick townhouse offers an excellent opportunity. Don't miss your chance to make this charming home your own! Contact Angela today.

More About this Property

| | |
|---|--------------------|
| Property ID | VWDGFB |
| Property Type | House |
| House Size | 91 m ² |
| Land Area | 300 m ² |
| Licensed Real Estate Agents (REAA2008) | |

Angela Martin 027 739 3370

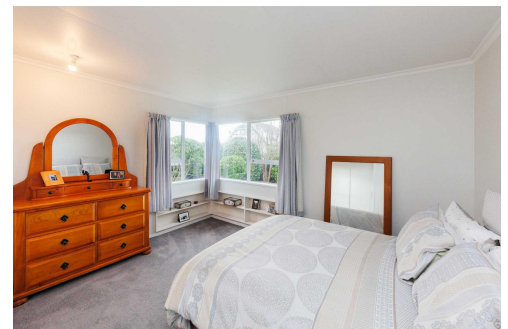
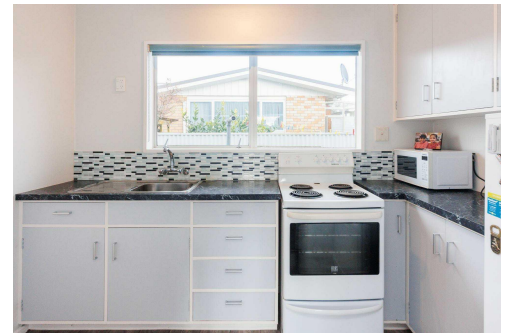
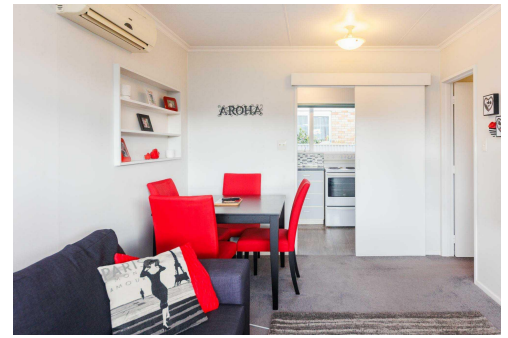
Residential Marketing Consultant | angela.martin@ljhookerpn.co.nz

LJ Hooker Palmerston North (06) 358 9009

Manawatu (1994) Ltd

219 Broadway Avenue, Palmerston North 4414

palmerstonnorth.ljhooker.co.nz | reception@ljhookerpn.co.nz



**LJ Hooker Palmerston North
(06) 358 9009**

Disclaimer: All information contained therein is gathered from relevant third parties sources. We cannot guarantee or give any warranty about the information provided. Interested parties must rely solely on their own enquiries.