

Waimataitai, 56 Ranui Avenue

A Solid Investment.

This spacious three double bedroom home is looking for new owners to bring it back to its former glory.

Boasting a double garage, plenty of storage, a private back garden with mature fruit trees and easily made access for a caravan or boat, a bath and a shower, two toilets and in a fantastic location so close to shops.

Call Bronya today for a viewing.

Offers over \$399,000

Disclaimer:

This information has been supplied by the owners and Corelogic. LJ Hooker Timaru, Geraldine and Waimate are merely passing over this information as supplied to us. We cannot guarantee its accuracy and reliability as we have not



Disclaimer: All information contained therein is gathered from relevant third parties sources. We cannot guarantee or give any warranty about the information provided. Interested parties must rely solely on their own enquiries.

3

1

2

For Sale

Enquiries Over \$399,000

View

ljhooker.co.nz/Y89GTA

Contact

Joelle Snook

027 844 5432

joelle.timaru@ljhooker.co.nz

LJ Hooker Timaru
(03) 688 3029

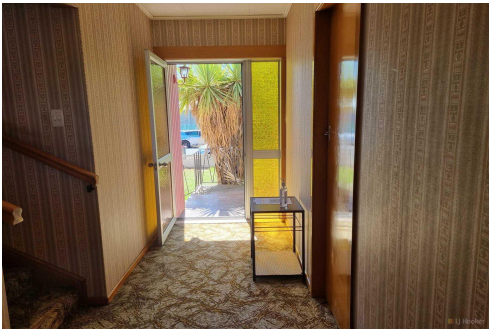
checked, audited or reviewed the information. All intending purchasers are advised to conduct their own due diligence investigation into this information. To the maximum extent permitted by law, we do not accept any responsibility to any part for the accuracy or use of the information herein. Enting Real Estate Limited Licensed (REAA 2008).

More About this Property

Property ID	Y89GTA
Property Type	House
House Size	180 m²
Land Area	625 m²
Licensed Real Estate Agents (REAA2008)	

Joelle Snook 027 844 5432
| joelle.timaru@ljhooker.co.nz

LJ Hooker Timaru (03) 688 3029
Enting Real Estate Limited
51 Church Street, Timaru 7910
timaru.ljhooker.co.nz | timaru@ljhooker.co.nz



Disclaimer: All information contained therein is gathered from relevant third parties sources. We cannot guarantee or give any warranty about the information provided. Interested parties must rely solely on their own enquiries.

LJ Hooker Timaru
(03) 688 3029