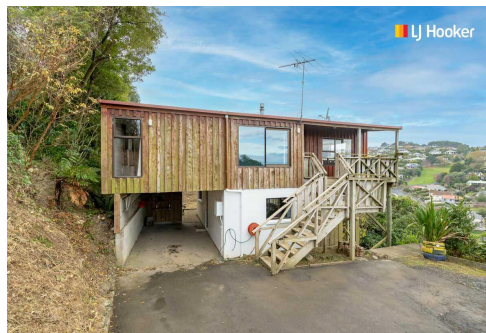
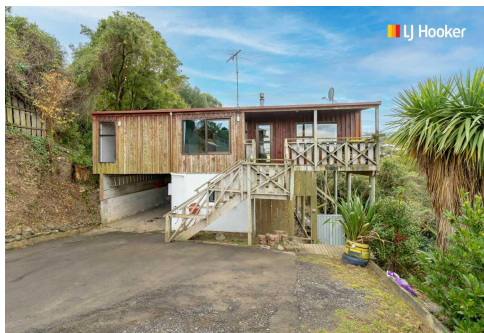




LJ Hooker

SOLD



Waverley, B/24 Archibald Street

As affordable as it gets in Waverley!

My vendors have made it very clear, they want me to bring them OFFERS! Building report available to serious buyers, so you can make your offer with confidence. Tucked away from the road, with panoramic views out to the South Pacific Ocean, this weatherboard house is the perfect peninsula starter home in the popular suburb of Waverley. Just minutes from South Dunedin and the CBD and sat on the doorstep to the Otago Peninsula, you couldn't hope for a better location to live. With 2 bedrooms, bath room, kitchen and living on the top level and new bathroom (inc. laundry) and further bedroom on the bottom level of this two storey home the layout would be perfect for a family with an older child wanting a little bit of their own space in the family home. There's even a separate access via the carport beneath the house. A heat pump on each level keeps the house toasty and complements the fire in the main living area upstairs. Decking on both sides of the house let you take in the views and the remainder of the

3

2

2

For Sale

Enquiries Over \$460,000

View

ljhooker.co.nz/3AABGDS

Contact

Richard Knights

027 577 3594

richardk@ljhdunedin.co.nz

LJ Hooker

LJ Hooker Dunedin
(03) 470 1370

Disclaimer: All information contained therein is gathered from relevant third parties sources. We cannot guarantee or give any warranty about the information provided. Interested parties must rely solely on their own enquiries.

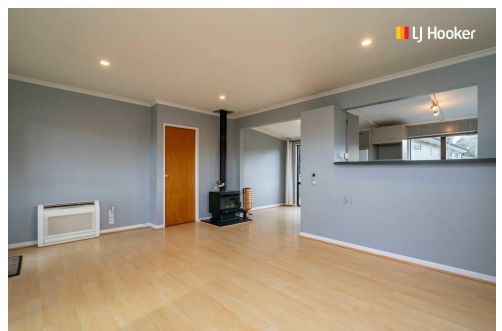
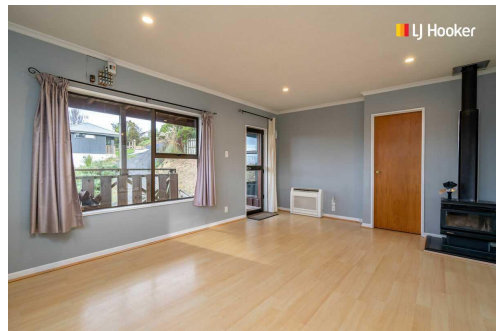
769m2 (approx.) section is laid out to fruit trees and bush for inquisitive minds to explore! With my vendors committed to moving to central Otago, this house is on the market for the first time in 19 years and viewing is highly recommended. Time to make your next stop the Peninsula!

More About this Property

Property ID	3AABGDS
Property Type	House
Land Area	769 m²
Licensed Real Estate Agents (REAA2008)	

Richard Knights 027 577 3594
Salesperson | richardk@ljhdunedin.co.nz

LJ Hooker Dunedin (03) 470 1370
Wayne Graham Realty Ltd
63 Musselburgh Rise, Dunedin 9013
dunedin.ljhooker.co.nz | dunedin@ljhdunedin.co.nz



Disclaimer: All information contained therein is gathered from relevant third parties sources. We cannot guarantee or give any warranty about the information provided. Interested parties must rely solely on their own enquiries.

LJ Hooker Dunedin
(03) 470 1370